

MERLYN EVANS

PRINTS

PENTAPTICH

Merlyn Evans, 1961

mezzotint on paper

Available individually or as a set of 5



Pentaptich No.1 1961
mezzotint on paper (69.5 x 55cm)



Pentaptich No.2 1961
mezzotint on paper (50 x 100.5cm)



Pentaptich No.3 1961
mezzotint on paper (100.5 x 50.2cm)



Pentaptich No.4 1961
mezzotint on paper (50 x 100cm)



Pentaptich No.5 1961
mezzotint on paper (70.2 x 55.2cm)

MERLYN EVANS

PRINTS

VERTICAL SUITE

Merlyn Evans, 1957

aquatint on paper

Available individually or as a set of 6



Thunderbird 1957

aquatint on paper (74 x 55cm)



Seed Pod 1957

aquatint on paper (74 x 50.4cm)



Corn Ghost 1957

aquatint on paper (70.8 x 50.5cm)



Standing Figure 1957

aquatint on paper (75 x 50.5cm)



Skull 1957

aquatint on paper (74 x 50cm)



Helmet Mask 1957

aquatint on paper (74.3 x 50.4cm)

MERLYN EVANS

PRINTS



Tetrptych No.2 1960
aquatint on paper (73.3 x 49.8cm)



Tetrptych No.3 1960
aquatint on paper (74.2 x 50.1cm)



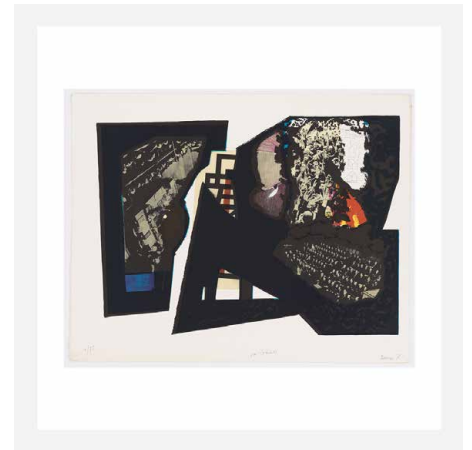
Tetrptych No.4 1960
aquatint on paper (73.8 x 50.1 cm)



Venture Triptych No.1 1969
mezzotint on paper (69.6 x 55cm)



Venture Triptych No.3 1970
mezzotint on paper (69.2 x 54.5cm)



Vox Populi 1971
colour lithograph (40.8 x 56.5cm)



Untitled colour



Porthmeor 1973
colour lithograph



St Ives Beach 1973
lithograph

MERLYN EVANS

PRINTS



Triptych No.1 1964
mezzotint on paper (69.7 x 55cm)



Triptych No.2 1964
mezzotint on paper (70 x 55cm)



Triptych No.3 1964
mezzotint on paper (70.2 x 55.2cm)



Diptych No.2 1962
mezzotint on paper (99.8 x 60cm)



Cheiromorph No.1 1965
mezzotint on paper (69.8 x 50cm)



Cheiromorph No.2 1966
mezzotint on paper (50.5 x 60cm)



The Invalid 1954
etching and aquatint (47 x 43.5cm)



Figure in Interior 1954
engraving

MERLYN EVANS

DRAWINGS

MATADOR + BULLS

Merlyn Evans, 1957

charcoal and ink on paper

Available individually or as a set of 5



Toro No.1 1957

charcoal on paper prints (55 x 74cm)



Toro No.2

charcoal on paper prints (55 x 74cm)



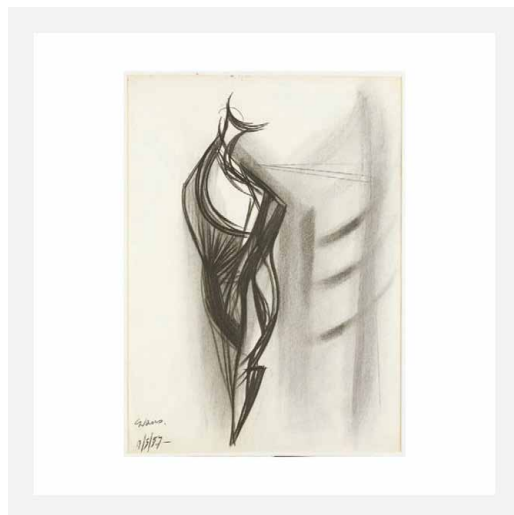
Toro No.3

charcoal on paper prints (55 x 74cm)



Matador No.1

charcoal on paper prints (67.5 x 50.5cm)



Matador No.2

charcoal on paper prints (75 x 55cm)

MERLYN EVANS

RESTRIKES

RESTRIKES

1 - 5 / 10

At the request of the artist's daughter, a selection of Merlyn's etching plates have been reprinted in small editions; the re-running of a plate is called a 'restrike'. The plates have been printed in Cambridge by Kip Gresham on Merlyn's own stock of English Whatman 140lb Ivory handmade paper.

Available individually or as a set of 10



Vertical Crustacean 1930
engraving on copper (49.7 x 26cm)



Pursuit 1932
drypoint on zinc (31.6 x 50.2cm)



Jealousy 1933
etching with drypoint on zinc (41 x 23cm)



Conquest of Time 1934
sugar lift aquatint with etching on zinc (25.4 x 20.2cm)



The Miners 1946
etching with aquatint on copper (32.8 x 40.5cm)

MERLYN EVANS

RESTRIKES

RESTRIKES

5 - 10 / 10

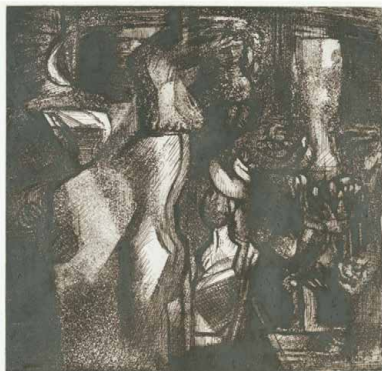
At the request of the artist's daughter, a selection of Merlyn's etching plates have been reprinted in small editions; the re-running of a plate is called a 'restrike'. The plates have been printed in Cambridge by Kip Gresham on Merlyn's own stock of English Whatman 140lb Ivory handmade paper.

Available individually or as a set of 10



The Patient 1953

etching with aquatint on copper (30.2 x 40.4cm)



Women in Interior 1946

etching with aquatint on copper (32.4 x 33.4cm)



Warehouse at Night 1953

etching with aquatint on copper (41 x 51cm)



The Chess Players 1951

etching with aquatint on copper (41.5 x 41.5cm)



The Dancer 1955

sugar lift with aquatint on zinc (46 x 17.2cm)

MERLYN EVANS

MINI PRINT SET

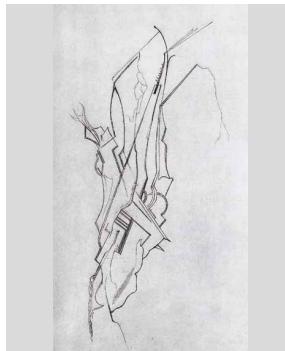
RESTRIKE MINI PRINTS

SET OF 10

Merlyn Evans, 1930 - 1955

Ten iconic prints, chosen for restrikes, presented in a limited edition folder: With artist background and information booklet.

15 x 21cm



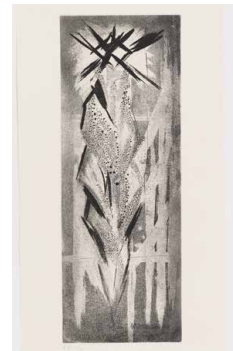
Vertical Crustacean 1930



Jealousy 1933



Pursuit 1933



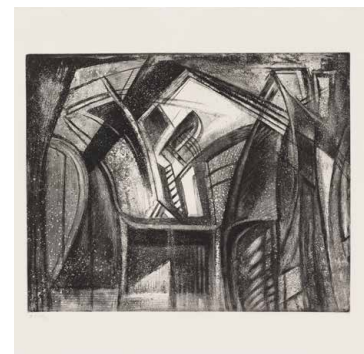
The Dancer 1955



Conquest of time 1934



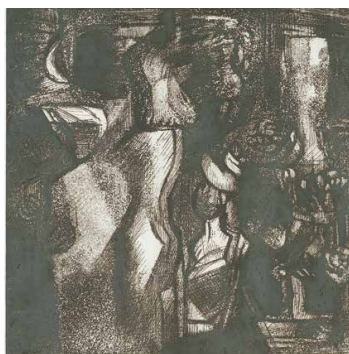
The patient 1953



Warehouse at night 1953



The chess players 1951



Women in interior 1946



The miners 1946

MERLYN EVANS

MONOGRAPH

MERLYN EVANS

MONOGRAPH

By Mel Gooding, published by Cameron Hollis.

192 page hardback book, chronicling his full history and works; print making, drawing, painting and sculpture.

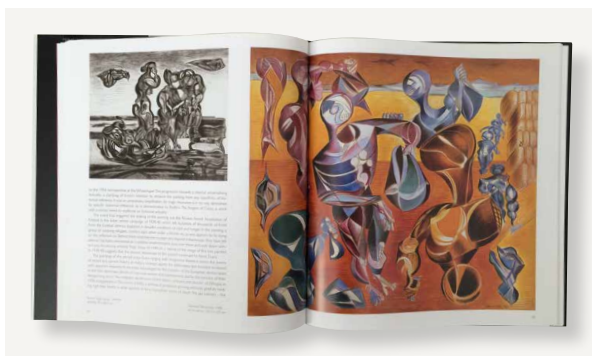
27.5 x 29.5cm



Pages 14-15



Pages 26-27



Pages 64-65



Pages 112-113



Pages 152-153



Pages 172-173